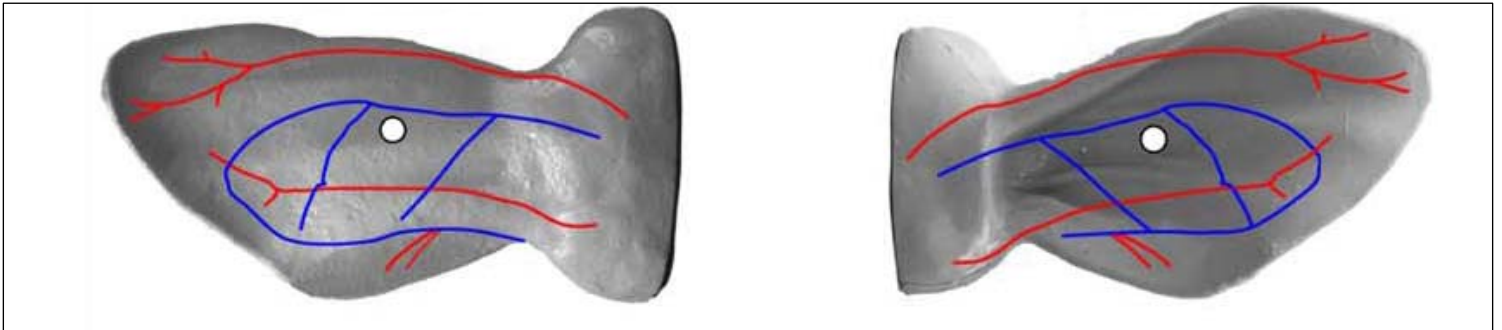


TAG APPLICATION INSTRUCTIONS

1. Each half of the tag must be positioned onto the applicator pliers properly
 - a. The male half (the stud) must be pushed completely onto the pin so that the pin tip is seated well into the stud lip.
 - b. Make sure the small tip on top is intact (the pointed tip)
2. Make certain the pliers are properly aligned
3. Position the tag in the center of the ear (see picture below), not towards the edge of the ear where the cartilage is thinner and weaker.
4. Do not penetrate ribs or visible blood vessels that may bleed and attract flies.
5. The closer the tag is to the head, the thicker the ear is and the more secure the tag will be
6. Close the applicator completely.
7. The male half must be inserted all the way into the female half to lock, which requires complete closer.
8. Please note that EIDs must be placed in the calf's LEFT ear. USV+ tags can be placed in either ear.

Back of Ear:

Front of Ear:



FEMALE PART OF TAG
Front of ear (LEFT Side)